



Kimley-Horn and Associates, Inc.  
URBAN RESOURCE GROUP

# SUPPLEMENTAL INFORMATION

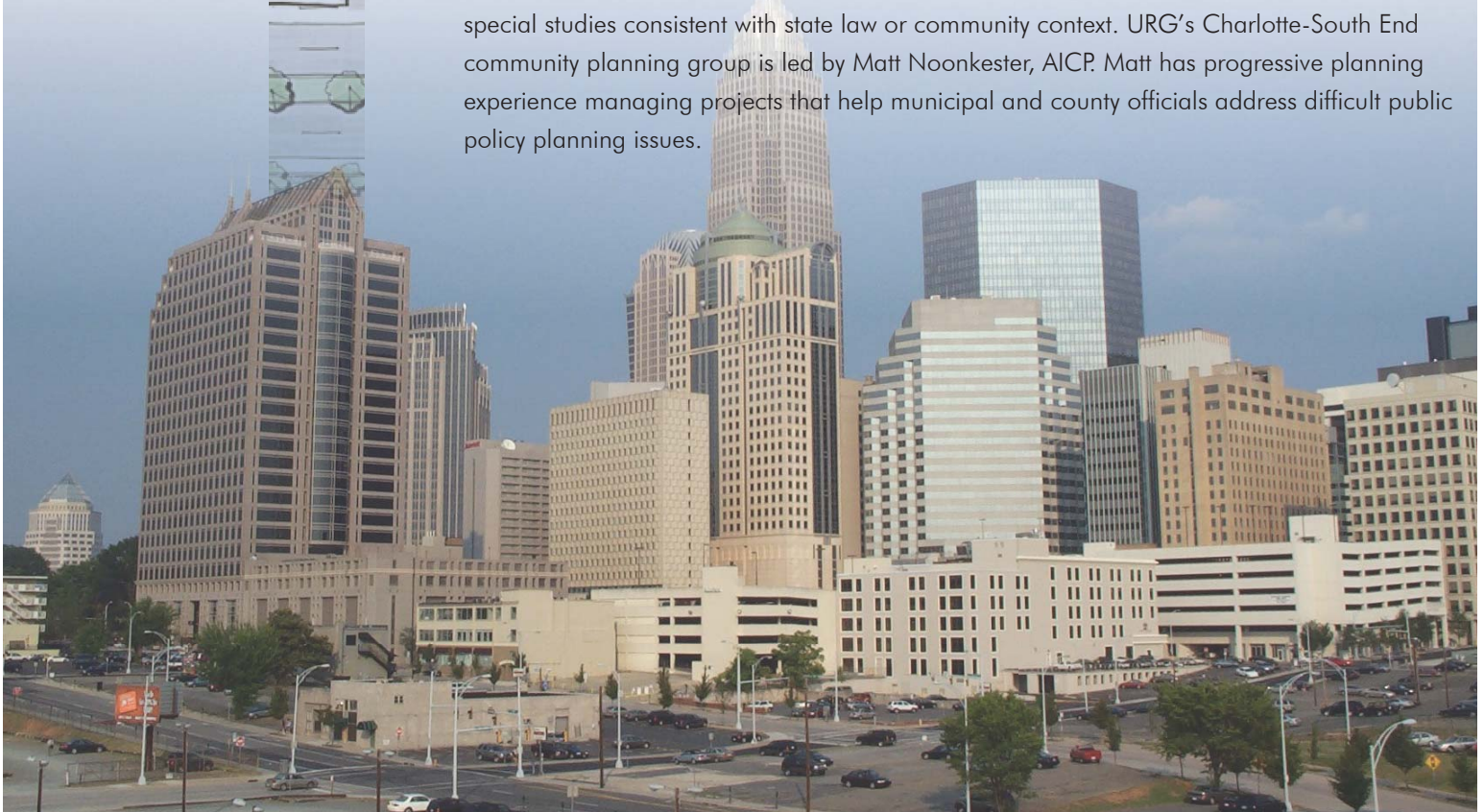
Below are brief descriptions of the diversified services Kimley-Horn/URG offers.

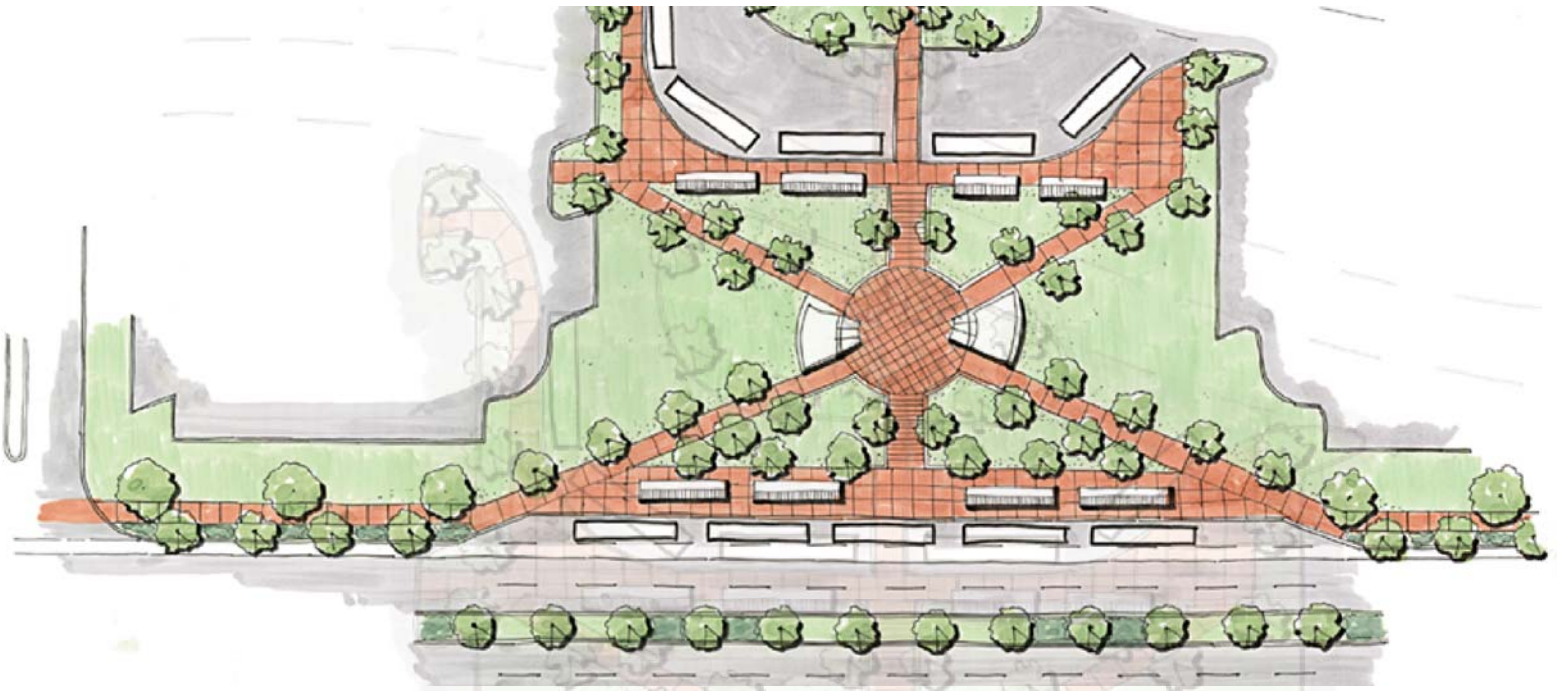
## ENTITLEMENT PLANNING/ZONING

URG provides comprehensive entitlement planning and zoning services to development, real estate, legal, and government clients, including conceptual site plans and renderings, feasibility analysis, public hearings, government relations, community relations, zoning variances, conditional uses, and wetlands mitigation. Our entitlements group in Charlotte-South End is led by Walter Fields, AICP, who has more than 35 years of experience that includes serving as land development manager for the Charlotte-Mecklenburg Planning Commission.

## COMMUNITY PLANNING

A successful community planning process leads to a blueprint for long-term, sustainable growth, making sure community character and local values are instilled in every future decision impacting the political jurisdiction. Our team emphasizes a process-driven approach to community planning. The result is grassroots support for a variety of regulatory tools and policy documents vital to fulfilling the community's vision for future growth and development — including comprehensive plans, small area plans, capital improvement plans, land development regulations, design guidelines, impact fee studies and ordinances, and other special studies consistent with state law or community context. URG's Charlotte-South End community planning group is led by Matt Noonkester, AICP. Matt has progressive planning experience managing projects that help municipal and county officials address difficult public policy planning issues.





## LAND PLANNING/SITE DESIGN

The best visions are reality-based. They are thoughtfully designed to come to life in the community within our clients' budgets and constraints. Great visions begin with understanding. As our landscape architects envision a project's future, they begin by studying the property's past. They examine the underpinnings of the site to produce a design that addresses not only aesthetics, but also function and sustainability. In addition, Kimley-Horn/URG is well-versed in developing green building alternatives using the fundamentals of LEED (Leadership in Energy and Environmental Design). As business people, we understand market demands, and our creative approach to sustainable design seeks to succeed on both fronts. Backed by our award-winning nationwide experience, we offer a broad perspective on what will work best for a site, coupled with a willingness to challenge preconceptions. As a result, our clients receive imaginative, cost-effective site master plans tailored specifically to their needs and goals.

URG's land planning/site design group in Charlotte-South End is led by Michael Abate, who specializes in master planning for mixed-used developments and projects ranging from parks and recreational spaces to environmentally sustainable trails and open space expansions.

Michael and his team are well versed in preparing design guidelines; designing retail/lifestyle, commercial/office, and residential developments, including monumentation and branding; and conducting public workshops.



Kimley-Horn and Associates, Inc.  
**URBAN RESOURCE GROUP**



## LANDSCAPE ARCHITECTURE

As metropolitan urban areas continue to grow, urban design, streetscape design, and landscape architecture have become integral components of roadway and transportation system designs and infrastructure improvements. Revitalizing commercial districts, controlling traffic flows, and providing recreational areas and pedestrian and bicycle facilities in increasingly congested areas are some of the solutions designed by our landscape architects and planners. We provide services in feasibility studies, master planning, design, permitting, public participation/consensus building, and construction administration. In addition, URG is among the premier parks and recreation planners in the country. From aquatic centers and water parks to sports complexes and local community parks, our integrated approach to planning, engineering, and design results in both public consensus for the proposed improvements and a successfully built project. URG's landscape architecture group in Charlotte-South End is led by Scott Mingonet, RLA, AICP. Scott has 20 years of experience as a landscape architect and urban planner. He and his team have provided landscape architecture services for streetscapes/roadway improvements, greenways/trails, and park and recreation sites, as well as residential, office, and mixed-use developments.

## URBAN DESIGN AND REDEVELOPMENT

Urban redevelopment requires an extraordinary ability to solve problems creatively, envision and design projects critical to the life of a community, and stimulate community involvement to achieve overall transformation. URG has developed an award-winning practice in the complex field of urban redevelopment that began in 1989 with our highly recognized design for Clematis Street in downtown West Palm Beach. Scott Mingonet, RLA, AICP leads URG's urban design and redevelopment group. Scott has been involved in every aspect of multidiscipline urban revitalization and master planning projects—from initial visioning to final implementation. He and his team excel in thinking creatively to develop reality-based solutions to complex urban design challenges.



## FORENSIC ENGINEERING

---

Kimley-Horn's forensic specialists are backed by years of practical experience and specialized training. Insurance professionals and attorneys nationwide call on us for accident investigation and reconstruction, failure analysis, due diligence investigations, building system investigations, environmental investigations, premises liability evaluations, vehicle component analysis, fire origin and cause investigations, and storm damage assessments. For commercial, residential, industrial, and historic buildings, our services include building envelope investigations, building code violation studies, construction defect evaluations, storm/flood/earthquake damage evaluations, condition assessments/due diligence, site/building reuse studies, ADA/OSHA compliance studies, facilities master planning, roof surveys/structural analyses, structural collapse and damage investigations, blasting/vibration damage evaluations, expert testimony, and mediation/arbitration support. Rick Moore, P.E. leads the Charlotte-South End forensics group. Rick has nearly 30 years of experience as an engineer and roof consultant. His expertise includes facility construction assessment; construction management; structural and roof damage assessment and inspection (including historic structures); and project management.



## CIVIL ENGINEERING/LAND DEVELOPMENT

---

Our Charlotte-South End office provides comprehensive site civil engineering and permitting services to support the efforts of our planning staff. Jay Banks, P.E. leads this group, which specializes in large, mixed-use, and high-density urban redevelopment. Bringing to this role more than 15 years of experience in the design and management of civil engineering projects, Jay has overseen the planning, design, and construction of urban complexes, residential subdivisions, commercial facilities, retail centers, industrial complexes, medical office buildings, and schools. Jay's expertise helps take concepts designed by our planning staff into the design and permitting phase.





## **TRANSPORTATION PLANNING/TRAFFIC ENGINEERING**

Our Charlotte-South End staff understands the special considerations of access, connectivity, and proximity to other modes of transportation necessary for mobility in an urban environment. Our transportation planning and traffic engineering group helps create optimal interactions between land, buildings, roads, pedestrians, transit, cars, and bikes. We understand the social, technical, and environmental implications of a project, as well as how to address governmental requirements and develop consensus within the community. The Kimley-Horn/URG transportation planning/traffic engineering group is led by Stephen Stansbery, AICP. Stephen specializes in transportation and land planning, context sensitive design, consensus building, and project management. Stephen and his team conduct corridor, parking, traffic, and access management studies; design pedestrian/bicycle corridors, streetscapes, and signals; develop comprehensive and long range transportation plans and interstate justification reports; and assist with transportation improvement programs, and congestion mitigation.





## **ENVIRONMENTAL SERVICES/STORMWATER**

Kimley-Horn's Charlotte Park office provides environmental consulting services for public agencies and private development clients. Our environmental scientists, certified floodplain managers, and environmental planners are well versed in all aspects of various state, federal, and other environmental laws and policies. Services provided by our in-house professionals include:

- Environmental permitting
- Natural resource site assessments (wetland, stream, and buffer determination and delineation)
- Environmental restoration/green infrastructure
- Expert testimony
- Stormwater master planning and design (best management practices, low impact development, and LEED compliance)
- Environmental documentation and site feasibility studies

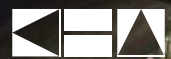




## UTILITIES/WATER RESOURCES

---

Kimley-Horn's water and wastewater capabilities encompass all planning, design, permitting, and construction observation services required from the onset of a project through the approval process to completion of the development. Kimley-Horn's professionals have award-winning experience in the design of water treatment and distribution systems. Most projects require our services for on-site water and wastewater collection and for connections to citywide distribution systems. This work includes designing to avoid underground conflicts with existing utilities, on-site system layout, and regulatory compliance. Our Charlotte Park utilities/water resources staff has worked with numerous local public works departments and can provide utility engineering services for any size project. Our staff is organized to meet our clients' specific water and wastewater site development needs. We have water distribution computer models for regional water supply planning, and we can coordinate simple utility connections.



Kimley-Horn and Associates, Inc.  
URBAN RESOURCE GROUP